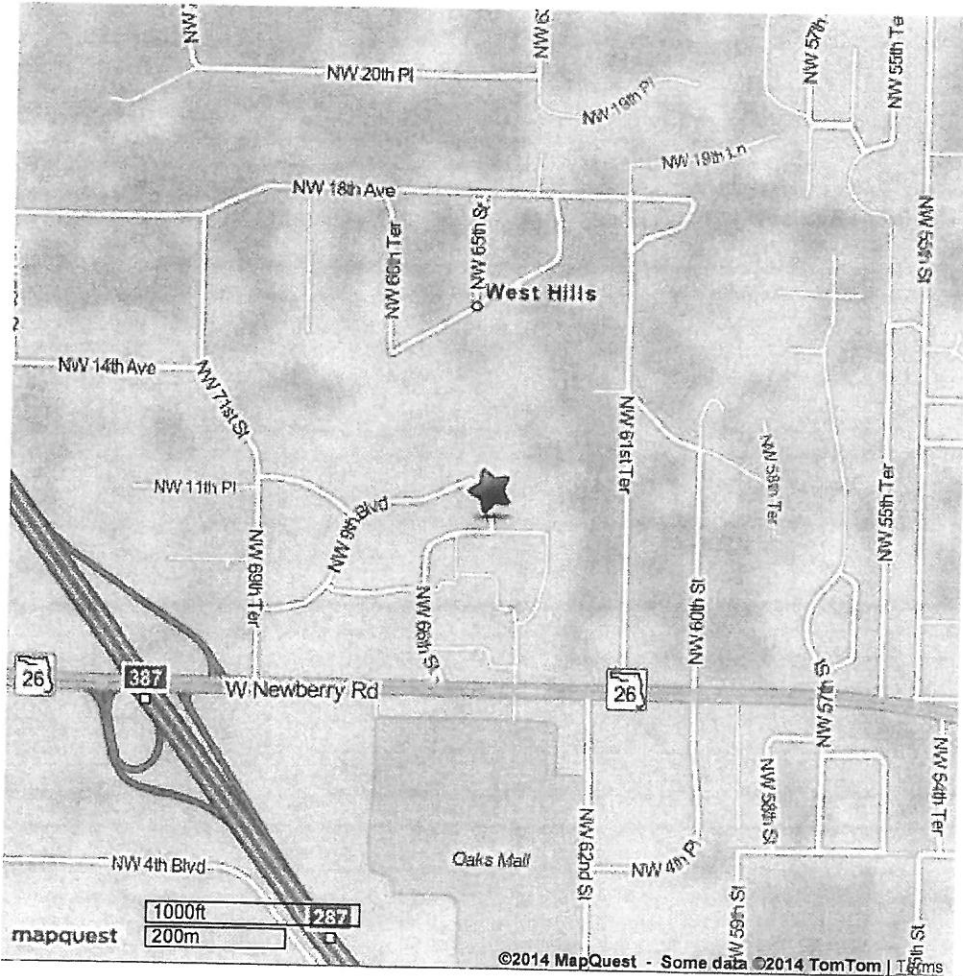




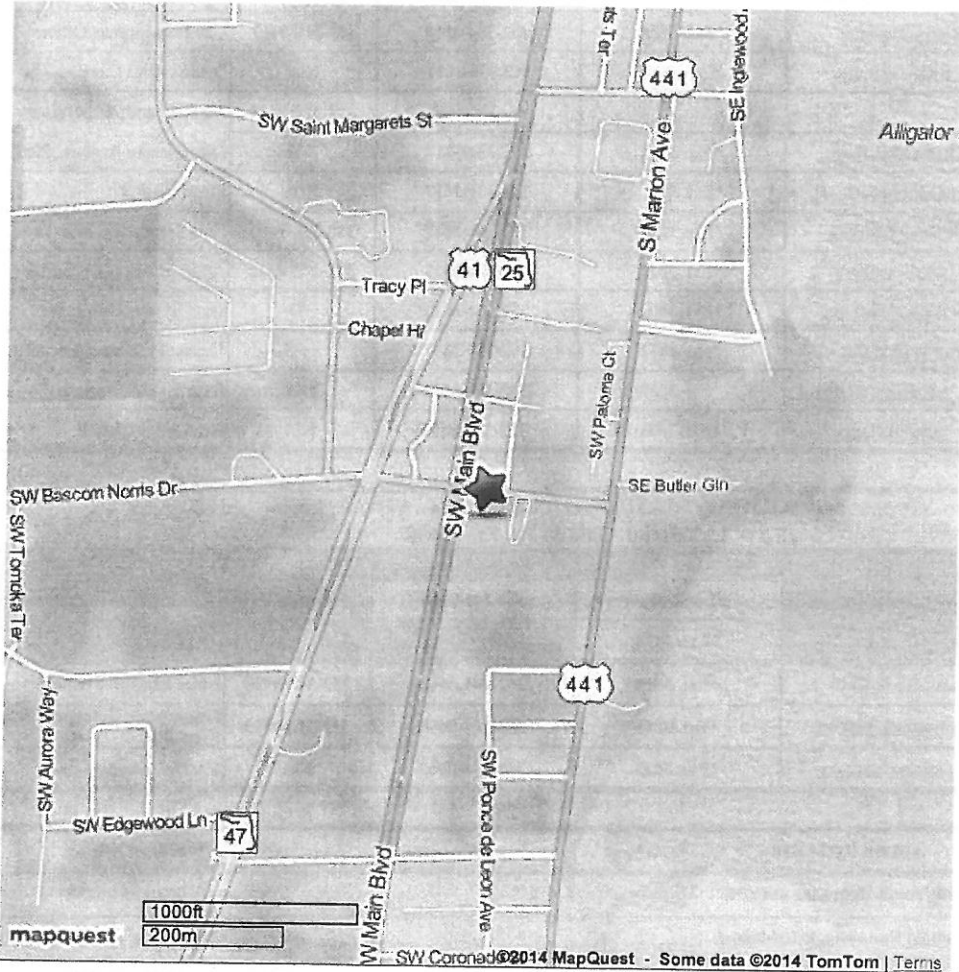
**LABCORP**  
1131 NW 64TH TER STE A  
GAINESVILLE, FL 32605  
Phone: 352-331-5341  
Fax: 352-333-2451  
Hours: M-FR 6:30A-3:30P SAT 8:00A-12:00P M-FR DRUG SCR 6:30A-3:00P SAT DRUG SCR 8:00A-11:30A



Maps and directions are informational only. No representation is made or warranty given as to the content or usability. User assumes all risk of use. Laboratory Corporation of America, MapQuest and their suppliers assume no responsibility for any loss resulting from such use.



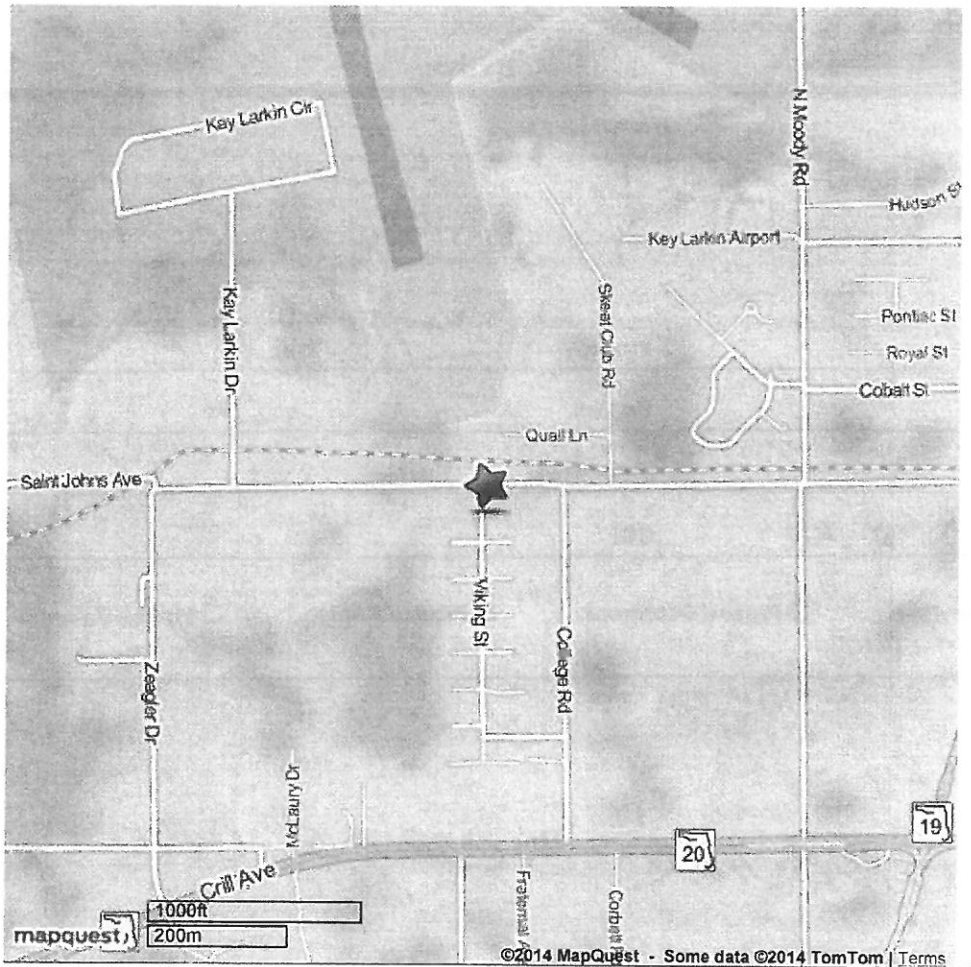
LABCORP  
265 SW Malone Street Suite 105  
LAKE CITY, FL 32025  
Phone: 386-755-5373  
Fax: 386-752-2953  
Hours: M-FR 7:00A-4:00P CLOSED LUNCH 12:00P-1:00P DRUG SCREENS 7:00A-11:30A 1:00P-3:00P



Maps and directions are informational only. No representation is made or warranty given as to the content or usability. User assumes all risk of use. Laboratory Corporation of America, MapQuest and their suppliers assume no responsibility for any loss resulting from such use.



**LABCORP**  
6100 SAINT JOHNS AVE STE C  
PALATKA, FL 32177  
Phone: 386-328-7619  
Fax: 386-328-9329  
Hours: M-FR 7:00A-4:00P LUNCH: 12:00P-1:00P DRUG SCREENS: 7:00A-11:00A 1:00P-3:00P



Maps and directions are informational only. No representation is made or warranty given as to the content or usability. User assumes all risk of use. Laboratory Corporation of America, MapQuest and their suppliers assume no responsibility for any loss resulting from such use.